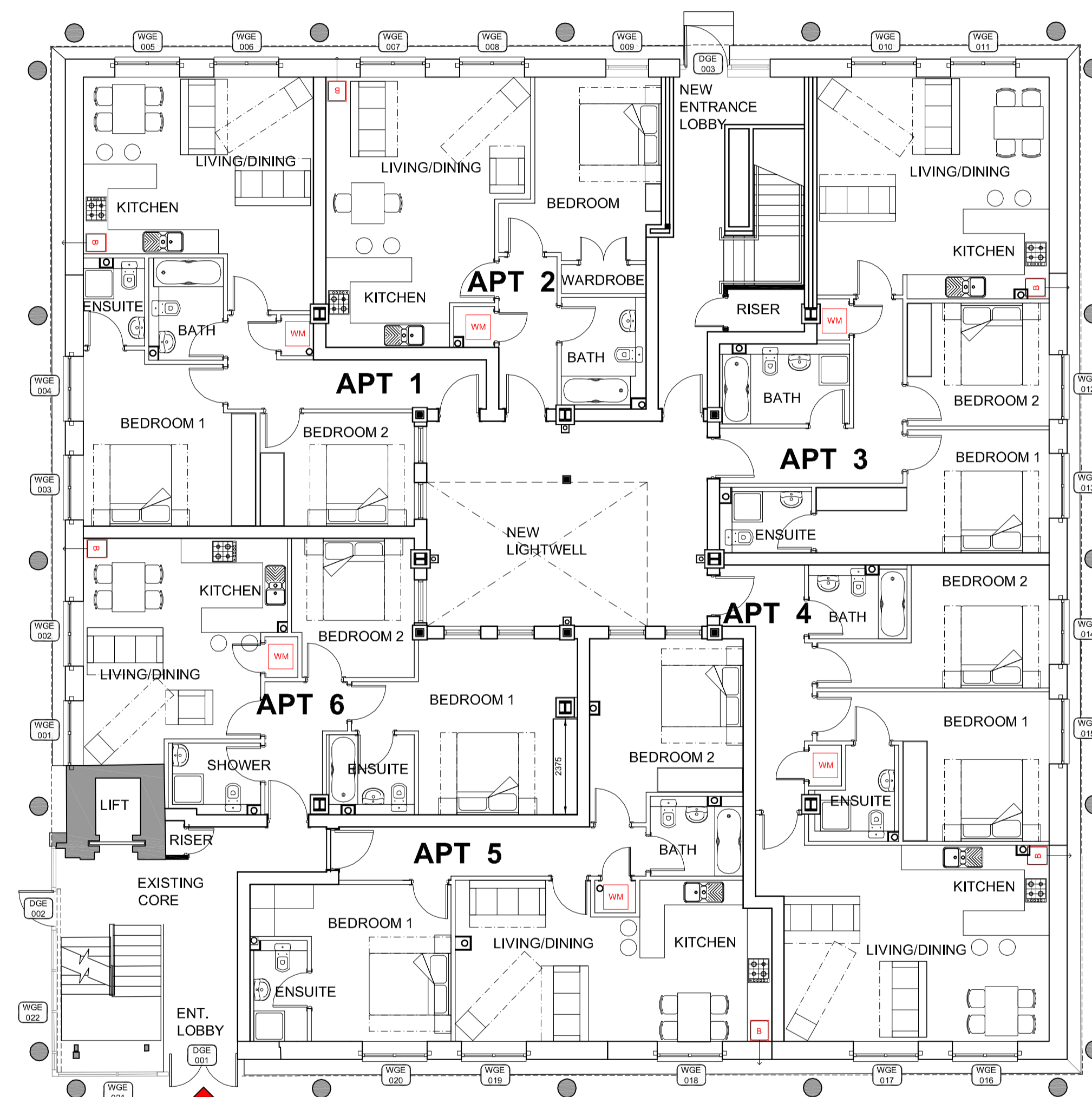


ATTENTION IS DRAWN TO THE FOLLOWING REMAINING SIGNIFICANT HAZARDS

NOTES

- DO NOT SCALE FROM THIS PRINT
- ALL DIMENSIONS TO BE VERIFIED ON SITE
- COPYRIGHT OF THIS DRAWING IS RESERVED BY RDT ARCHITECTS



C1 CONSTRUCTION ISSUE FS 02.06.15  
DRAWING GENERALLY UPDATED.  
INTERNAL DOOR WITHIN  
ENTRANCE LOBBY DISCONTINUED

REV DESCRIPTION BY DATE  
STATUS

**CONSTRUCTION**

CLIENT

TROUT RISE DEVELOPMENTS LTD

PROJECT

ASTRAL HOUSE  
THE RUNWAY, RUISLIP  
HA4 6SE

DRWG TITLE

PROPOSED  
GROUND FLOOR PLAN  
GENERAL ARRANGEMENT

DRAWN BY FS DATE FEB 15 SCALE 1:100 CHECKED BY RT

DRWG NO. 1059-C-250 PAPER SIZE A1 REVISION C1



ARCHITECTS

5 Kinsbourne Court, Luton Road  
Harpden, Hertfordshire AL5 3BL  
T: +44(0)1582 461060  
E: rdt@rdtarchitects.co.uk  
www.rdtarchitects.co.uk

PROPOSED GROUND FLOOR PLAN- GENERAL ARRANGEMENT